

Personal Factors

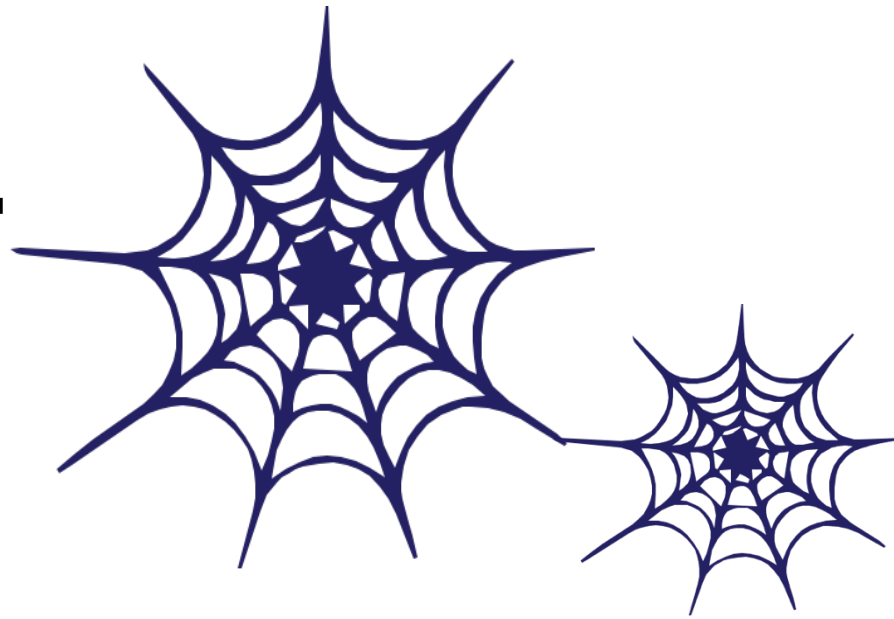
Mindsets, Skills & Motivations

SYSTEMS THINKER with a keen understanding of institutional structure and need for sustainability

MOTIVATED by personal passions and service, empathetic, eager to steward a vision that is accessible to a diverse community

AWARENESS of campus activity in relation to the community & regional ecosystem

ABILITY TO MANAGE many projects and relationships



T-SHAPED MINDSET with depth of knowledge in a specific discipline and an understanding of multiple fields

PERCEPTION of institutional change as a process, not an event

ABILITY TO CONNECT people across functions of the university to leverage partnerships, resources and assets

Contextual Factors

Relationships, Spaces & Resources

RELATIONAL PLATFORMS; places and spaces where faculty, students and partners can collaborate across the university

REGIONAL ALLIES with other UIFs that can serve as sounding boards, supporters and collaborators.

SMALL BETS; incremental projects that Fellows can use to build a case for support

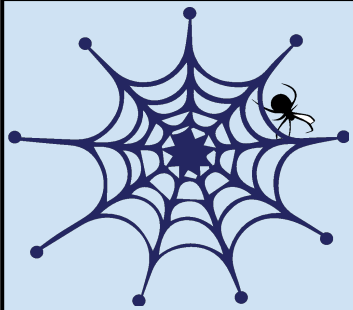
SUSTAINABLE FUNDING SOURCES for new programs and events

LEARNING LABS where students can test and implement ideas that are adapted from other campuses,

PARTNERSHIP with key faculty, staff and administrators that can help navigate bureaucracy

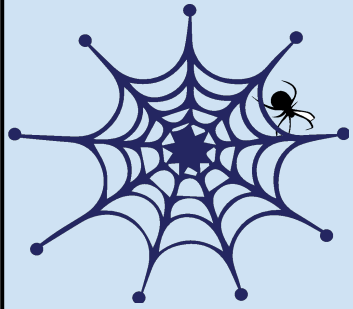
STRONG RELATIONSHIPS with faculty sponsor, alumni network and trustees that support UIF activities

What role do University Innovation Fellows play as agents of change on college campuses?



Scenario 1:

Small campus with emergent I & E ecosystem, little prior interest in entrepreneurship from the administration or faculty. Campus lacks faculty with expertise in I & E , and the Fellow's faculty sponsor is familiar with the program through Epicenter, but the Fellow is deer in the headlights. The university recently went through a round of budget cuts and lacks substantial resources to fund new programs. The student body and faculty like the sound of new I & E programs, but they have few incentives to start or participate in them.



Scenario 2:

Large campus with siloed I & E ecosystem. The College of Business has entrepreneurship events for their students, while the College of Engineering has innovation events for their students. There are no joint events with students from all disciplines. The colleges are protective of their events due to limited funds for I & E. Most events have low attendance due to students' lack of knowledge about the events. Fellows see themselves as "separate" from the administrators and those who want to contribute to the ecosystem are clueless about breaking into ongoing activities and relationships.